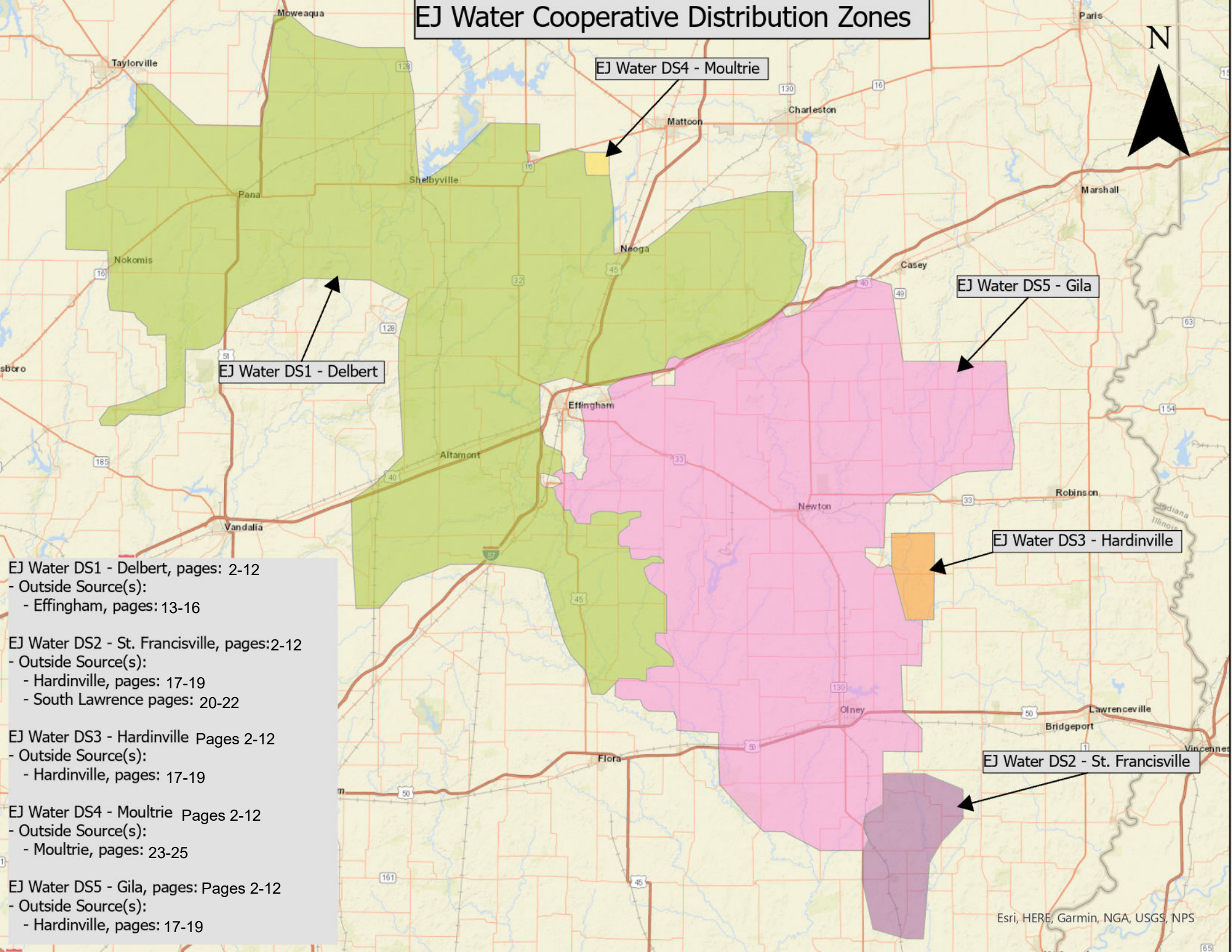


EJ Water Cooperative Distribution Zones



- EJ Water DS1 - Delbert, pages: 2-12
 - Outside Source(s):
 - Effingham, pages: 13-16
- EJ Water DS2 - St. Francisville, pages: 2-12
 - Outside Source(s):
 - Hardinville, pages: 17-19
 - South Lawrence pages: 20-22
- EJ Water DS3 - Hardinville Pages 2-12
 - Outside Source(s):
 - Hardinville, pages: 17-19
- EJ Water DS4 - Moultrie Pages 2-12
 - Outside Source(s):
 - Moultrie, pages: 23-25
- EJ Water DS5 - Gila, pages: Pages 2-12
 - Outside Source(s):
 - Hardinville, pages: 17-19

Consumer Confidence Report

Annual Drinking Water Quality Report

EJ WATER COOPERATIVE

IL0790010

Annual Water Quality Report for the period of January 1 to December 31, 2025

This report is intended to provide you with important information about your drinking water and the efforts made by the water system to provide safe drinking water.

The source of drinking water used by EJ WATER COOPERATIVE is Surface Water

For more information regarding this report contact:

Name Doug Baxter

Phone 217-925-5566

Este informe contiene información muy importante sobre el agua que usted bebe. Tradúzcalo ó hable con alguien que lo entienda bien.

Source of Drinking Water
The sources of drinking water (both tap water and bottled water) include rivers, lakes, streams, ponds, reservoirs, springs, and wells. As water travels over the surface of the land or through the ground, it dissolves naturally-occurring minerals and, in some cases, radioactive material, and can pick up substances resulting from the presence of animals or from human activity.
Contaminants that may be present in source water include: <ul style="list-style-type: none">- Microbial contaminants, such as viruses and bacteria, which may come from sewage treatment plants, septic systems, agricultural livestock operations, and wildlife.- Inorganic contaminants, such as salts and metals, which can be naturally-occurring or result from urban storm water runoff, industrial or domestic wastewater discharges, oil and gas production, mining, or farming.- Pesticides and herbicides, which may come from a variety of sources such as agriculture, urban storm water runoff, and residential uses.- Organic chemical contaminants, including synthetic and volatile organic chemicals, which are by-products of industrial processes and petroleum production, and can also come from gas stations, urban storm water runoff, and septic systems.- Radioactive contaminants, which can be naturally-occurring or be the result of oil and gas production and mining activities.

Drinking water, including bottled water, may reasonably be expected to contain at least small amounts of some contaminants. The presence of contaminants does not necessarily indicate that water poses a health risk. More information about contaminants and potential health effects can be obtained by calling the EPAs Safe Drinking Water Hotline at (800) 426-4791.

In order to ensure that tap water is safe to drink, EPA prescribes regulations which limit the amount of certain contaminants in water provided by public water systems. FDA regulations establish limits for contaminants in bottled water which must provide the same protection for public health.

Some people may be more vulnerable to contaminants in drinking water than the general population.

Immuno-compromised persons such as persons with cancer undergoing chemotherapy, persons who have undergone organ transplants, people with HIV/AIDS or other immune system disorders, some elderly and infants can be particularly at risk from infections. These people should seek advice about drinking water from their health care providers. EPA/CDC guidelines on appropriate means to lessen the risk of infection by Cryptosporidium and other microbial contaminants are available from the Safe Drinking Water Hotline (800-426-4791).

Lead can cause serious health problems, especially for pregnant women and young children. Lead in drinking water is primarily from materials and components associated with service lines and home plumbing. The drinking water supplier is responsible for providing high quality drinking water and removing lead pipes, but cannot control the variety of materials used in plumbing components in your home. You share the responsibility for protecting yourself and your family from the lead in your home plumbing. You can take responsibility by identifying and removing lead materials within your home plumbing and taking steps to reduce your family's risk. Before drinking tap water, flush your pipes for several minutes by running your tap, taking a shower, doing laundry or a load of dishes. You can also use a filter certified by an American National Standard Institute accredited certifier

to reduce lead in drinking water. If you are concerned about lead in your water, you may wish to have your water tested, contact **Doug Baxter** at 217-925-5566. Information on lead in drinking water, testing methods, and steps you can take to minimize exposure is available at <http://www.epa.gov/safewater/lead>.

Source Water Information

Source Water Name	Type of Water	Report Status	Location
CC03 - EJ SOUTH EFFINGHAM MASTER FF IL0490250 TP01 TO DS5	SW	_____	_____
CC04 - EJ HARDINVILLE WC CONNECTIONFF IL0330020 TP02, FLOWS	GW	_____	_____
CC06 - EJ S. LAWRENCE WC MASTER	GW	_____	_____
CC08 - EJ NORTH EFFINGHAM MASTER FF IL0490250 TP01 TO DS5	SW	_____	Approximately 773 feet west of the intersection of Interstate 57 and County Rd. 1600 E, Effingham
CC09 - EJ HARDINVILLE WC CONNECTIONFF IL0330020, TP02, FLOWS	GW	_____	Intersection of County Rd. 2300 E and 650 N, Oblong zip code, Jasper/Crawford County line.
CC10 - EJ MOULTRIE CO. RWD MASTER FF1395150 CC04	SW	_____	Northeast corner of the intersection of County Rd. 1500 N and County Rd. 3405 E, Gays zip code, Shelby County.
IN01895 - HOLLAND ENERGY RESRVR	SW	_____	_____
IN01952 - KASKASKIA RIVER INTAKE KASKASKIA RIVER	SW	_____	_____
IN02255 - SIDE CHANNEL RESERVOIR	SW	_____	_____
WELL 1 (WL00807) NORTH WELLFIELD. DRILLED	GW	_____	Located approximately 1.23 miles northeast of the intersection of E. 1650th Ave. and N. 800th St., Newton zip code.
WELL 11 (WL01123) DRILLED 9/30/1996.	GW	_____	Located approximately 2,200 feet west of the intersection of N. 925th St. and E. 1475th Ave., Newton zip code.
WELL 12 (WL01237) DRILLED 7/28/1997, SOUTH	GW	_____	Located approximately 2,200 feet west of the intersection of N. 925th St. and E. 1475th Ave., Newton zip code.
WELL 13 (WL01353) DRILLED JUNE 2000, SOUTH	GW	_____	Located approximately 2,200 feet west of the intersection of N. 925th St. and E. 1475th Ave., Newton zip code.
WELL 14 (WL01354) DRILLED JUNE 2000, SOUTH	GW	_____	_____
WELL 2 (WL00808) NORTH WELLFIELD. DRILLED	GW	_____	Located approximately 1.23 miles northeast of the intersection of E. 1650th Ave. and N. 800th St., Newton zip code.
WELL 20 (WL02005) WELLFIELD JUST SOUTH OF	GW	_____	Approximately 1.35 miles east of the intersection of E. 180th Ave. and N. 800th St. Zip code is for Hidalgo, IL.
WELL 21 (WL02006) WELLFIELD JUST SOUTH OF	GW	_____	Approximately 1.35 miles east of the intersection of E. 180th Ave. and N. 800th St. Zip code is for Hidalgo, IL.
WELL 22 (WL02007) WELLFIELD JUST SOUTH OF	GW	_____	Approximately 1.35 miles east of the intersection of E. 180th Ave. and N. 800th St. Zip code is for Hidalgo, IL.
WELL 4 (WL01764) NORTH WELLFIELD, DRILLED	GW	_____	Located approximately 1.23 miles northeast of the intersection of E. 1650th Ave. and N. 800th St., Newton zip code.

WELL 5 (WL01843)

NORTH WELLFIELD, DRILLED

GW

Located approximately 1.23 miles northeast of the intersection of E. 1650th Ave. and N. 800th St., Newton zip code.

Source Water Assessment

We want our valued customers to be informed about their water quality. If you would like to learn more, please feel welcome to attend any of our regularly scheduled meetings. The source water assessment for our supply has been completed by the Illinois EPA. If you would like a copy of this information, please stop by City Hall or call our water operator at 217-925-5566. To view a summary version of the completed Source Water Assessments, including: Importance of Source Water; Susceptibility to Contamination Determination; and documentation/recommendation of Source Water Protection Efforts, you may access the Illinois EPA website at <http://www.epa.state.il.us/cgi-bin/wp/swap-fact-sheets.pl>.

Source of Water: EJ WATER COOPERATIVE To determine E J Water Corporation's susceptibility to groundwater contamination, the Illinois EPA reviewed a Well Site Survey, published in 1996 by the Illinois EPA, a Source Water Protection Management Plan, prepared by the facility's planning committee and published in 1997, and a survey of the south well field performed in 2005. Based on the above documents, the community water supply's source water is susceptible to IOC and SOC contamination from non-point sources related to agricultural land use, although no presence of any pesticides/herbicides were detected in any water samples thus far analyzed. As a result of monitoring conducted at the wells and entry point to the distribution system, the land use activities, and source water protection initiatives by the facility, the E J Water Corporation's groundwater source is not susceptible to VOC contamination. However, Illinois EPA considers all surface water sources of public water supply to be susceptible to potential pollution problems. Hence the reason for mandatory treatment of all public water supplies in Illinois. Mandatory treatment includes coagulation, sedimentation, filtration and disinfection. Source of Water: HARDINVILLE WATER COMPANY To determine Hardinville Water Company's susceptibility to groundwater contamination, the 2007 survey was reviewed. No potential sources, routes, or possible problem sites exist within the 400 foot minimum setback zones, 1,000 foot maximum setback zone, or the 5-year recharge area. No sites are located within either setback zone or recharge area. The Illinois EPA considers the source water of this facility to be susceptible to SOC contamination. This determination is based on a number of criteria including: monitoring conducted at the wells, monitoring conducted at the entry point to the distribution system, the available hydrogeologic data on the wells, and the land-use activities in the recharge area of the wells. Source of Water: EFFINGHAM Illinois EPA considers all surface water sources of public water supply to be susceptible to potential pollution problems. Hence the reason for mandatory treatment of all public water supplies in Illinois. Mandatory treatment includes coagulation, sedimentation, filtration and disinfection. Primary sources of pollution in Illinois lakes can include agricultural runoff, land disposal (septic systems) and shoreline erosion. Source of Water: ST. FRANCISVILLE To determine St. Francisville's susceptibility to groundwater contamination, the source water protection areas were surveyed by the Illinois Rural Water Association in 2002. During this survey, no potential sources, routes, or possible problem sites were located within the 400 foot minimum setback zone of wells #6, #7 and #8. Additionally, no potential sources or problem sites were located within the potential 1,000 foot maximum setback zone of the wells. Furthermore, no potential sources, routes, or possible problem sites were encountered within St. Francisville's recharge areas. The Illinois EPA has determined that St. Francisville's wells #6, #7 and #8 are susceptible to SOC contamination. This determination is based on a number of criteria including: monitoring conducted at the wells, monitoring conducted at the entry point to the distribution system, and the available hydrogeologic data on the wells.

2025 Regulated Contaminants Detected

Coliform Bacteria

Maximum Contaminant Level Goal	Total Coliform Maximum Contaminant Level	Highest No. of Positive	Fecal Coliform or E.coli Maximum Contaminant Level	Total No. of Positive E.coli or Fecal Coliform Samples	Violation	Likely Source of Contamination
0	1 Positive Monthly Sample	1		0	N	Naturally Present in the environment

Lead and Copper

Definitions:

Action Level: The concentration of a contaminant which, if exceeded, triggers treatment or other requirements which a water system must follow.

Action Level Goal (ALG): The level of a contaminant in drinking water below which there is no known or expected risk to health. ALGs allow for a margin of safety.

Copper Range:

EJ Water- DS3	20 ug/L to 230 ug/L
EJ Water- DS4	7.9 ug/L to 220 ug/L
EJ Water- DS5	<3.0 ug/L to 220 ug/L

Lead Range:

EJ Water- DS3	<1.0 ug/L to 5.6 ug/L
EJ Water- DS4	0 ug/L to <1.0 ug/L
EJ Water- DS5	<1.0 ug/L to 4.1 ug/L

To obtain a copy of the system's lead tap sampling data: **Doug Baxter 217-925-5566 dbaxter@ejcoop.com**

CIRCLE ONE: Our Community Water System **has** / **has not** developed a service line material inventory.

To obtain a copy of the system's service line inventory: **Doug Baxter 217-925-5566 dbaxter@ejcoop.com**

Lead and Copper	Date Sampled	MCLG	Action Level	90th Percentile	# Sites over AL	Units	Violation	Likely Source of Contamination
Copper- DS3	2025	1300	1300	220	0	ug/L	N	Corrosion of household plumbing systems; erosion of natural deposits
Lead- DS3	2025	15	15	4.4	0	ug/L	N	
Copper- DS4	2025	1300	1300	170	0	ug/L	N	
Lead- DS4	2025	15	15	0	0	ug/L	N	
Copper- DS5	2025	1300	1300	110	0	ug/L	N	
Lead- DS5	2025	15	15	0	0	ug/L	N	

Water Quality Test Results

Definitions:	The following tables contain scientific terms and measures, some of which may require explanation.
Avg:	Regulatory compliance with some MCLs are based on running annual average of monthly samples.
Level 1 Assessment:	A Level 1 assessment is a study of the water system to identify potential problems and determine (if possible) why total coliform bacteria have been found in our water system.

Water Quality Test Results

Level 2 Assessment:	A Level 2 assessment is a very detailed study of the water system to identify potential problems and determine (if possible) why an E. coli MCL violation has occurred and/or why total coliform bacteria have been found in our water system on multiple occasions.
Maximum Contaminant Level or MCL:	The highest level of a contaminant that is allowed in drinking water. MCLs are set as close to the MCLGs as feasible using the best available treatment technology.
Maximum Contaminant Level Goal or MCLG:	The level of a contaminant in drinking water below which there is no known or expected risk to health. MCLGs allow for a margin of safety.
Maximum residual disinfectant level or MRDL:	The highest level of a disinfectant allowed in drinking water. There is convincing evidence that addition of a disinfectant is necessary for control of microbial contaminants.
Maximum residual disinfectant level goal or MRDLG:	The level of a drinking water disinfectant below which there is no known or expected risk to health. MRDLGs do not reflect the benefits of the use of disinfectants to control microbial contaminants.
na:	not applicable.
mrem:	millirems per year (a measure of radiation absorbed by the body)
ppb:	micrograms per liter or parts per billion - or one ounce in 7,350,000 gallons of water.
ppm:	milligrams per liter or parts per million - or one ounce in 7,350 gallons of water.
Treatment Technique or TT:	A required process intended to reduce the level of a contaminant in drinking water.

Regulated Contaminants

Disinfectants and Disinfection By-Products	Collection Date	Highest Level Detected	Range of Levels Detected	MCLG	MCL	Units	Violation	Likely Source of Contamination
Chlorine	2025	2	2 - 2	MRDLG = 4	MRDL = 4	ppm	N	Water additive used to control microbes.
Chlorite	2025	0.96	0.058 - 0.96	0.8	1	ppm	N	By-product of drinking water disinfection.
Haloacetic Acids (HAA5)	2025	57	2.66 - 73.1	No goal for the total	60	ppb	N	By-product of drinking water disinfection.
Total Trihalomethanes (TTHM)	2025	75	9.54 - 98	No goal for the total	80	ppb	N	By-product of drinking water disinfection.
Inorganic Contaminants	Collection Date	Highest Level Detected	Range of Levels Detected	MCLG	MCL	Units	Violation	Likely Source of Contamination
Barium	2025	0.0042	0.0042 - 0.0042	2	2	ppm	N	Discharge of drilling wastes; Discharge from metal refineries; Erosion of natural deposits.
Fluoride	2025	0.4	0.413 - 0.413	4	4.0	ppm	N	Erosion of natural deposits; Water additive which promotes strong teeth; Discharge from fertilizer and aluminum factories.
Nitrate [measured as Nitrogen]	2025	0.38	0.18 - 0.38	10	10	ppm	N	Runoff from fertilizer use; Leaching from septic tanks, sewage; Erosion of natural deposits.
Sodium	2025	12	12 - 12			ppb	N	Erosion from naturally occurring deposits. Used in water softener regeneration.
Radioactive Contaminants	Collection Date	Highest Level Detected	Range of Levels Detected	MCLG	MCL	Units	Violation	Likely Source of Contamination
Combined Radium 226/228	07/07/2021	0.189	0.189 - 0.189	0	5	pCi/L	N	Erosion of natural deposits.
Synthetic organic contaminants including pesticides and herbicides	Collection Date	Highest Level Detected	Range of Levels Detected	MCLG	MCL	Units	Violation	Likely Source of Contamination
Atrazine	2025	1	0 - 0.48	3	3	ppb	N	Runoff from herbicide used on row crops.

Turbidity

	Limit (Treatment Technique)	Level Detected	Violation	Likely Source of Contamination
Highest single measurement	1 NTU	0.208 NTU	N	Soil runoff.
Lowest monthly % meeting limit	0.3 NTU	100%	N	Soil runoff.

Information Statement: Turbidity is a measurement of the cloudiness of the water caused by suspended particles. We monitor it because it is a good indicator of water quality and the effectiveness of our filtration system and disinfectants.

Total Organic Carbon

The percentage of Total Organic Carbon (TOC) removal was measured each month and the system met all TOC removal requirements set, unless a TOC violation is noted in the violations section.

Violations Table

Consumer Confidence Rule			
The Consumer Confidence Rule requires community water systems to prepare and provide to their customers annual consumer confidence reports on the quality of the water delivered by the systems.			
Violation Type	Violation Begin	Violation End	Violation Explanation
CCR ADEQUACY/AVAILABILITY/CONTENT	07/01/2025	2025	We failed to provide to you, our drinking water customers, an annual report that adequately informed you about the quality of our drinking water and the risks from exposure to contaminants detected in our drinking water.

Cryptosporidium			
Gastrointestinal illness (e.g., diarrhea, vomiting, cramps).			
Violation Type	Violation Begin	Violation End	Violation Explanation
MONITORING, SOURCE (LT2), MAJOR	04/01/2025	04/30/2025	We failed to test our drinking water for the contaminant and period indicated. Because of this failure, we cannot be sure of the quality of our drinking water during the period indicated.
MONITORING, SOURCE (LT2), MAJOR	07/01/2025	07/31/2025	We failed to test our drinking water for the contaminant and period indicated. Because of this failure, we cannot be sure of the quality of our drinking water during the period indicated.

E. coli			
Fecal coliforms and E. coli are bacteria whose presence indicates that the water may be contaminated with human or animal wastes. Microbes in these wastes can cause short-term effects, such as diarrhea, cramps, nausea, headaches, or other symptoms. They may pose a special health risk for infants, young			
Violation Type	Violation Begin	Violation End	Violation Explanation
MONITORING, SOURCE (LT2), MAJOR	04/01/2025	04/30/2025	We failed to test our drinking water for the contaminant and period indicated. Because of this failure, we cannot be sure of the quality of our drinking water during the period indicated.

Turbidity			
Turbidity has no health effects. However, turbidity can interfere with disinfection and provide a medium for microbial growth. Turbidity may indicate the presence of disease-causing organisms. These organisms include bacteria, viruses, and parasites that can cause symptoms such as nausea, cramps, diarrhea, and			
Violation Type	Violation Begin	Violation End	Violation Explanation
MONITORING, SOURCE (LT2), MAJOR	04/01/2025	04/30/2025	We failed to test our drinking water for the contaminant and period indicated. Because of this failure, we cannot be sure of the quality of our drinking water during the period indicated.

Special Notice for Availability of Unregulated Contaminant Monitoring Data

IMPORTANT INFORMATION ABOUT YOUR DRINKING WATER

Availability of Monitoring Data for Unregulated Contaminants by EJ Water Cooperative

Our water system has tested for a series of unregulated contaminants during 2025. Unregulated contaminants are those which do not yet have a drinking water standard set by the EPA. The purpose of monitoring these contaminants is to help EPA decide whether the contaminants should have a standard. As our customers, you have a right to know that this data is available.

In 2025, there were no detections of any unregulated contaminants in our tests.

If you are interested in examining the results or have questions about these contaminants, please contact Doug Baxter at 217-925-5566.

This notice is being sent to you by EJ Water Cooperative (IL0790010).

Date Distributed: 05/01/2026

Source Water Assessment

We want our valued customers to be informed about their water quality. If you would like to learn more, please feel welcome to attend any of our regularly scheduled meetings. The source water assessment for our supply has been completed by the Illinois EPA. If you would like a copy of this information, please stop by City Hall or call our water operator at 217-347-5056. To view a summary version of the completed Source Water Assessments, including: Importance of Source Water; Susceptibility to Contamination Determination; and documentation/recommendation of Source Water Protection Efforts, you may access the Illinois EPA website at <http://www.epa.state.il.us/cgi-bin/wp/swap-fact-sheets.pl>.

Source of Water: EFFINGHAM Illinois EPA considers all surface water sources of public water supply to be susceptible to potential pollution problems. Hence the reason for mandatory treatment of all public water supplies in Illinois. Mandatory treatment includes coagulation, sedimentation, filtration and disinfection. Primary sources of pollution in Illinois lakes can include agricultural runoff, land disposal (septic systems) and shoreline erosion.

Special Notice for Availability of Unregulated Contaminant Monitoring Data

IMPORTANT INFORMATION ABOUT YOUR DRINKING WATER

Availability of Monitoring Data for Unregulated Contaminants For City of Effingham.

Our water system has sampled a series of unregulated contaminants. Unregulated contaminants are those that don't yet have a drinking water standard set by EPA. The purpose of monitoring these contaminants is to help EPA decide whether the contaminants should have a standard. As our customers, you have a right to know that this data is available. If you are interested in examining the results, please contact the Water Treatment Plant at 217-347-5056.

This notice is being sent to you by the City of Effingham.

State Water System ID: IL0490250.

Bureau of Water ID # W0490250003

Effingham

Lead and Copper

Definitions:

Action Level: The concentration of a contaminant which, if exceeded, triggers treatment or other requirements which a water system must follow.

Action Level Goal (ALG): The level of a contaminant in drinking water below which there is no known or expected risk to health. ALGs allow for a margin of safety.

Copper Range: 3.2 ug/l to 70 ug/l
 Lead Range: <1.0 ug/l to 1.7 ug/l

To obtain a copy of the system's lead tap sampling data: Contact WTP @ 217-347-5056

CIRCLE ONE: Our Community Water Supply has not developed a service line material inventory.
 To obtain a copy of the system's service line inventory: Contact WTP @ 217-347-5056

Lead and Copper	Date Sampled	MCLG	Action Level (AL)	90th Percentile	# Sites Over AL	Units	Violation	Likely Source of Contamination
Copper	06/20/2023	1.3	1.3	0.057	0	ppm	N	Corrosion of household plumbing systems; Erosion of natural deposits.
Lead	06/20/2023	0	15	1.2	0	ppb	N	Corrosion of household plumbing systems; Erosion of natural deposits.

Water Quality Test Results

Definitions: The following tables contain scientific terms and measures, some of which may require explanation.

Avg: Regulatory compliance with some MCLs are based on running annual average of monthly samples.

Level 1 Assessment: A Level 1 assessment is a study of the water system to identify potential problems and determine (if possible) why total coliform bacteria have been found in our water system.

Level 2 Assessment: A Level 2 assessment is a very detailed study of the water system to identify potential problems and determine (if possible) why an E. coli MCL violation has occurred and/or why total coliform bacteria have been found in our water system on multiple occasions.

Maximum Contaminant Level or MCL: The highest level of a contaminant that is allowed in drinking water. MCLs are set as close to the MCLGs as feasible using the best available treatment technology.

Maximum Contaminant Level Goal or MCLG: The level of a contaminant in drinking water below which there is no known or expected risk to health. MCLGs allow for a margin of safety.

Maximum residual disinfectant level or MRDL: The highest level of a disinfectant allowed in drinking water. There is convincing evidence that addition of a disinfectant is necessary for control of microbial contaminants.

Effingham

Water Quality Test Results

Maximum residual disinfectant level goal or MRDLG:	The level of a drinking water disinfectant below which there is no known or expected risk to health. MRDLGs do not reflect the benefits of the use of disinfectants to control microbial contaminants.
na:	not applicable.
mrem:	millirems per year (a measure of radiation absorbed by the body)
ppb:	micrograms per liter or parts per billion - or one ounce in 7,350,000 gallons of water.
ppm:	milligrams per liter or parts per million - or one ounce in 7,350 gallons of water.
Treatment Technique or TT:	A required process intended to reduce the level of a contaminant in drinking water.

Regulated Contaminants

Disinfectants and Disinfection By-Products	Collection Date	Highest Level Detected	Range of Levels Detected	MCLG	MCL	Units	Violation	Likely Source of Contamination
Chloramines	2025	2.1	1.9 - 2.7	MRDLG = 4	MRDL = 4	ppm	N	Water additive used to control microbes.
Haloacetic Acids (HAA5)	2025	25	12.16 - 32.3	No goal for the total	60	ppb	N	By-product of drinking water disinfection.
Total Trihalomethanes (TTHM)	2025	31	14 - 40.1	No goal for the total	80	ppb	N	By-product of drinking water disinfection.
Inorganic Contaminants	Collection Date	Highest Level Detected	Range of Levels Detected	MCLG	MCL	Units	Violation	Likely Source of Contamination
Barium	2025	0.016	0.016 - 0.016	2	2	ppm	N	Discharge of drilling wastes; Discharge from metal refineries; Erosion of natural deposits.
Fluoride	2025	0.4	0.431 - 0.431	4	4.0	ppm	N	Erosion of natural deposits; Water additive which promotes strong teeth; Discharge from fertilizer and aluminum factories.
Nitrate [measured as Nitrogen]	2025	0.36	0.36 - 0.36	10	10	ppm	N	Runoff from fertilizer use; Leaching from septic tanks, sewage; Erosion of natural deposits.
Sodium	2025	41	41 - 41			ppb	N	Erosion from naturally occurring deposits. Used in water softener regeneration.

Turbidity

	Limit (Treatment Technique)	Level Detected	Violation	Likely Source of Contamination
Highest single measurement	1 NTU	0.18 NTU	N	Soil runoff.
Lowest monthly % meeting limit	0.3 NTU	100%	N	Soil runoff.

Information Statement: Turbidity is a measurement of the cloudiness of the water caused by suspended particles. We monitor it because it is a good indicator of water quality and the effectiveness of our filtration system and disinfectants.

Total Organic Carbon

The percentage of Total Organic Carbon (TOC) removal was measured each month and the system met all TOC removal requirements set, unless a TOC violation is noted in the violations section.

Effingham

Hardinville Water Company, IL0330020 Annual Drinking Water Quality Report

for the period of January 1 to December 31, 2025

This report is intended to provide you with important information about your drinking water and the efforts made by the water system to provide safe drinking water. The source of drinking water used by HARDINVILLE WATER COMPANY is Ground Water. For more information regarding this Annual Consumer Confidence Report (CCR) contact: Ethan Mendenhall, 618-577-3556, email hardinvillevater@gmail.com, also on the web at hardinvillevater.com. Este informe contiene informacion muy importante sobre el agua que usted bebe. Traduzcalo o hable con alguien que lo entienda bien. The Board of Directors meets at the office of the Hardinville Water Company on the second Monday of each month at 8:30 am. The office is located at 4440 N 575th Street, Robinson, Illinois. The public is invited to attend.

Source of Drinking Water

The sources of drinking water (both tap water and bottled water) include rivers, lakes, streams, ponds, reservoirs, springs, and wells. As water travels over the surface of the land or through the ground, it dissolves naturally-occurring minerals and, in some cases, radioactive material, and can pick up substances resulting from the presence of animals or from human activity.

Contaminants that may be present in source water include: - *Microbial contaminants*, such as viruses and bacteria, which may come from sewage treatment plants, septic systems, agricultural livestock operations, and wildlife. -*Inorganic contaminants*, such as salts and metals, which can be naturally-occurring or result from urban storm water runoff, industrial or domestic wastewater discharges, oil and gas production, mining, or farming. -*Pesticides and herbicides*, which may come from a variety of sources such as agriculture, urban storm runoff, and residential uses. -*Organic chemical contaminants*, including synthetic and volatile organic chemicals, which are by-products of industrial processes and petroleum production, and can, also, come from gas stations, urban storm runoff, and septic systems. -*Radioactive contaminants*, which can be naturally-occurring or be the result of oil and gas production and mining activities.

Drinking water, including bottled water, may reasonably be expected to contain at least small amounts of some contaminants. The presence of contaminants does not necessarily indicate that water poses a health risk. More information about contaminants and potential health effects can be obtained by calling the EPA's Safe Drinking Water Hotline at (800) 426-4791.

In order to ensure that tap water is safe to drink, EPA prescribes regulations which limit the amount of certain contaminants in water provided by public water systems. FDA regulations establish limits for contaminants in bottled water which must provide the same protection for public health. Some people may be more vulnerable to contaminants than the general population. Immuno-compromised persons such as persons with cancer undergoing chemotherapy, transplants, people with HIV/AIDS or other immune system disorders, some elderly and infants can be particularly at risk from infections. These people should seek advice about drinking water from their health care providers. EPA/CDC guidelines on appropriate means to lessen the risk of infection by Cryptosporidium and other microbial contaminants are available from the Safe Drinking Water Hotline (800) 426-4791.

Source Water Assessment

We want our valued customers to be informed about their water quality. If you would like to learn more, please feel welcome to attend any of our regularly scheduled meetings. The source water assessment for our supply has been completed by the Illinois EPA. If you would like a copy of the information, please stop by the Company Office at 4440 N 575th Street, Robinson, IL or call our water operator at (618) 557-3556 and we will mail you one. To view the summary version of the completed Source Water Assessments, including: Importance of Source Water Susceptibility to Contamination Determination; and documentation/recommendation of Source Water Protection Efforts, you may access the Illinois EPA website at <http://www.epa.state.il.us/cgi-bin/vp/swap-fact-sheets.pl>.

To determine Hardinville Water's susceptibility to groundwater contamination, the 2007 survey was reviewed. No potential sources, routes, or possible problem sites exist within the 400 foot minimum setback zone, 1,000 foot maximum setback zone, or the 5-year recharge area. No sites were located within either setback zone or recharge area. The Illinois EPA considers the source of this water of this facility to be susceptible to risk contamination. This determination is based on a number of criteria including: monitoring conducted at the wells, monitoring conducted at the entry point to the distribution system, the available hydro-geologic data on the wells, and the land-use activities in the recharge area of the wells.

Source Water Information

Source Water Name: **WELL 1** (01566), Type of Water: **Ground Water**, Report Status: **Active**, Location: **NORTHERN WELL**

Source Water Name: **WELL 2** (01567), Type of Water: **Ground Water**, Report Status: **Active**, Location: **SOUTHERN WELL**

Source Water Name: **WELL 3** (01643), Type of Water: **Ground Water**, Report Status: **Active**, Location: **MIDDLE WELL**

Water Quality Test Results. The following tables contain scientific terms and measures, some may require explanation.

Level 1 Assessment: A level 1 assessment is a study of a water system to identify potential problems and determine (if possible) why total coliform bacteria have been found in our water system

Level 2 Assessment: A level 2 assessment is a very detailed study of the water system to identify potential and determine (if possible) why an E. coli violation MCL has occurred and/or why total coliform bacteria have been found in our water system on multiple occasions

Hardinville

Definitions: The following tables contain scientific terms and measures, some of which may require explanation.

Maximum Contaminant Level Goal or MCLG: The level of a contaminant in drinking water below which there is no known or expected risk to health. MCLGs allow for a margin of safety.

Maximum Contaminant Level or MCL: The highest level of a contaminant that is allowed in drinking water. MCLs are set as close to the MCLGs as feasible using the best available treatment technology.

Maximum residual disinfectant level goal or MRDLG: The level of a drinking water disinfectant below which there is no known or expected risk to health. MRDLGs do not reflect the benefits of the use of disinfectants to control microbial contaminants.

Maximum residual disinfectant level or MRDL: The highest level of a disinfectant allowed in drinking water. There is convincing evidence that addition of a disinfectant is necessary for control of microbial contaminants.

ppb: micrograms per liter or parts per billion - or one ounce in 7,350,000 gallons of water.

ppm: milligrams per liter or parts per million - or one ounce in 7,350 gallons of water.

mrem: millirems per year (a measure of radiation absorbed by the body).

Treatment Technique or TT: A required process intended to reduce the level of a contaminant in drinking water.

na: not applicable.

Avg: Regulatory compliance with some MCLs are based on running annual average of monthly samples.

ppm: milligrams per liter or parts per million - or one ounce in 7,350 gallons of water.

Action Level Goal: The level of a contaminant in drinking water below which there is no known or expected risk to health. ALGs allow for a margin of safety.

Action Level: The concentration of a contaminant which, if exceeded, triggers treatment or other requirements which a water system must follow.

Lead and Copper

Copper Range: 0 ppm to 0.593 ppm

Lead Range: 0 ppb to 11.3 ppb

To obtain a copy of the system's lead tap sampling data call and request a copy at 618-557-3556.

Our Community Water Supply has developed a service line material inventory. To obtain a copy of the system's service line inventory please contact 618-557-3556 to request a copy.

Lead can cause serious health problems, especially for pregnant women and young children. Lead in drinking water is primarily from materials and components associated with service lines and home plumbing. Hardinville Water Company is responsible for providing high quality drinking water and removing lead pipes but cannot control the variety of materials used in plumbing components in your home. You share the responsibility for protecting yourself and your family from the lead in your home plumbing. You can take responsibility by identifying and removing lead materials within your home plumbing and taking steps to reduce your family's risk. Before drinking tap water, flush your pipes for several minutes by running your tap, taking a shower, doing laundry or a load of dishes. You can also use a filter certified by an American National Standards Institute accredited certifier to reduce lead in drinking water. If you are concerned about lead in your water, you may wish to have your water tested, contact Hardinville Water company at 618-557-3556. Information on lead in drinking water, testing methods, and steps you can take to minimize exposure is available at <http://www.epa.gov/safewater/lead>.

Lead and Copper	Date Sampled	MCLG	Action Level (AL)	90 th Percentile	# Sites Over AL	Units	Violation	Likely Source of Contamination
Copper	2024	1.3	1.3	0.316	0	ppm	N	Erosion of natural deposits; Leaching from wood preservatives; Corrosion of household plumbing systems
Lead	2024	0	15	7.18	0	ppb	N	

Regulated Contaminants

Disinfectants & Disinfection By-Products	Collection Date	Highest Level Detected	90 th Percentile	MCLG	MCLG	MCL	Units	Violation	Likely Source of Contaminant
Total Haloacetic Acids (HAA5)	2025	8	8.3-8.3	No goal for the total	No goal for the total	60	ppb	N	By-product of drinking water chlorination
TTHMs (Total Trihalomethanes)	2025	24	24 - 24	No goal for the total	No goal for the total	80	ppb	N	By-product of drinking water chlorination
Chlorine	2025	1.2	1.2-1.2	MRDLG = 4	MRDLG = 4	MRDL = 4	ppm	N	Water additive used to control microbes
Contaminant	TT	MCLG	VALUE	DATE	VIOLATION		SOURCE		
E. Coli	TT	N/A	Positive	4-08-25	No				Human and Animal Fecal Waste
E. Coli	TT	N/A	Positive	4-09-25	No				

The positive E-Coli samples were samples taken on our raw water source, particularly one well out of three wells on water that has not been treated with disinfectant (chlorine). These samples do not reflect treated water quality or water that is in the distribution system.

Hardinville Water Company detected E. coli and total coliforms in their source water sample for Well 1 on April 8th, 2025.

On April 8th, 2025, we were informed that our routine total coliform sample collected on Well 1 on April 7th, 2025, was total coliform and e-coli positive. As required, we resampled that source on April 8th, 2025, after being notified, and shut that source off. The April 8th, 2025, re-sample on Well 1 also tested positive for total coliforms and e-coli and we were notified on April 9th, 2025. Well 1 was left off until 4-23-25, to allow river level to go down and to allow inspection of piping and well before shocking the well with chlorine and re-sampling. After inspection of well piping there was a pin hole discovered on the drain back line, and the line was disconnected and repaired. Well 1 was ran to waste after shocking it, and resampled on April 23rd, 2025, and then shut off. We were notified on April 24th, 2025 that the sample was Negative for Total Coliforms and E. coli. On April 24th, 2025, we sampled Well 1 again to satisfy the second sample 24 hours apart rule, and on April 25th, 2025, we were notified that the sample was again Negative for total coliforms and E. coli. After this we were allowed to put Well 1 back online per IEPA and lower the cl residual from 2.00 ppm back down to 1.40 ppm which the I.E.P.A had us raise once we got the second positive coliform and e coli results back on Well 1.

Inadequately treated or inadequately protected water may contain disease-causing organisms. These organisms can cause symptoms such as diarrhea, nausea, cramps, and associated headaches. Fecal indicators are microbes whose presence indicates that the water may be contaminated with human or animal wastes. Microbes in these wastes can cause short-term health effects, such as diarrhea, cramps, nausea, headaches, or other symptoms. They may pose a special health risk for infants, young children, some of the elderly, and people with severely compromised immune systems.

In response, we turned Well 1 off as soon as we were informed of positive sample, inspected the Well 1 plumbing and components, discovered a defective drain back line and replaced it, shocked the well, and took two samples on Well 1 24 hours apart after repairing the drain back line. We stayed in contact with the IEPA through the entire process and followed their orders, protocol, and guidance.

Inorganic Contaminants	Collection Date	Highest Level Detected	Rng of Levels Detected	MCLG	MCL	Units	Violation	Likely Source of Contaminant
Barium	2024	0.0252	0.0252-0.0252	2	2	ppm	N	Discharge of drilling wastes; Discharge from metal refineries; Erosion of natural deposits
Fluoride (Monthly)	2025	0.90	0.60 - 0.90	4	4.0	ppm	N	Erosion of natural deposits; Water additive which promotes strong teeth; Discharge from fertilizer and aluminum factories
Nitrate (measured as nitrogen)	2025	1	1.13-1.13	10	10	ppm	N	Runoff from fertilizer use; Leaching from septic tanks, sewage; Erosion of natural deposits
Sodium	2024	8.90	8.90 - 8.90			ppm	N	Erosion of naturally occurring deposits; used in water softener regeneration
Radioactive Contaminants	Collection Date	Highest Level Detected	Rng of Levels Detected	MCLG	MCL	Units	Violation	Likely Source of Contaminant
Combined Radium 226/228	7-12-21	0.87	0.87 - 0.87	0	5	pCi /L	N	Erosion of natural occurring deposits
Gross Alpha excl Radon & Uranium	7-12-21	0.78	0.78 - 0.78	0	15	pCi /L	N	Erosion of natural occurring deposits

Hardinville

Lead and Copper

Definitions:
 Action Level: The concentration of a contaminant which, if exceeded, triggers treatment or other requirements which a water system must follow.
 Action Level Goal (ALG): The level of a contaminant in drinking water below which there is no known or expected risk to health. ALGs allow for a margin of safety.

Copper Range: 0 ug/L to 378 ug/L
 Lead Range: 0 ug/L to 0 ug/L

To obtain a copy of the system's lead tap sampling data: Call 618-707-1181 or email slwc3669@hotmail.com

CIRCLE ONE: Our Community Water Supply has not developed a service line material inventory.
 To obtain a copy of the system's service line inventory: Call 618-707-1181 or email slwc3669@hotmail.com

Lead and Copper	Date Sampled	MCLG	Action Level (AL)	90th Percentile	# Sites Over AL	Units	Violation	Likely Source of Contamination
Copper	2025	1.3	1.3	0.238	0	ppm	N	Corrosion of household plumbing systems; Erosion of natural deposits.

Water Quality Test Results

Definitions: The following tables contain scientific terms and measures, some of which may require explanation.

Avg: Regulatory compliance with some MCLs are based on running annual average of monthly samples.

Level 1 Assessment: A Level 1 assessment is a study of the water system to identify potential problems and determine (if possible) why total coliform bacteria have been found in our water system.

Level 2 Assessment: A Level 2 assessment is a very detailed study of the water system to identify potential problems and determine (if possible) why an E. coli MCL violation has occurred and/or why total coliform bacteria have been found in our water system on multiple occasions.

Maximum Contaminant Level or MCL: The highest level of a contaminant that is allowed in drinking water. MCLs are set as close to the MCLGs as feasible using the best available treatment technology.

Maximum Contaminant Level Goal or MCLG: The level of a contaminant in drinking water below which there is no known or expected risk to health. MCLGs allow for a margin of safety.

Maximum residual disinfectant level or MRDL: The highest level of a disinfectant allowed in drinking water. There is convincing evidence that addition of a disinfectant is necessary for control of microbial contaminants.

Maximum residual disinfectant level goal or MRDLG: The level of a drinking water disinfectant below which there is no known or expected risk to health. MRDLGs do not reflect the benefits of the use of disinfectants to control microbial contaminants.

na: not applicable.

Water Quality Test Results

mrem: millirems per year (a measure of radiation absorbed by the body)

ppb: micrograms per liter or parts per billion - or one ounce in 7,350,000 gallons of water.

ppm: milligrams per liter or parts per million - or one ounce in 7,350 gallons of water.

Treatment Technique or TT: A required process intended to reduce the level of a contaminant in drinking water.

Regulated Contaminants

Disinfectants and Disinfection By-Products	Collection Date	Highest Level Detected	Range of Levels Detected	MCLG	MCL	Units	Violation	Likely Source of Contamination
Chlorine	2025	1.4	1.07 - 1.6	MRDLG = 4	MRDL = 4	ppm	N	Water additive used to control microbes.
Haloacetic Acids (HAA5)	2025	4	3.7 - 3.7	No goal for the total	60	ppb	N	By-product of drinking water disinfection.
Total Trihalomethanes (TTHM)	2025	12	12 - 12	No goal for the total	80	ppb	N	By-product of drinking water disinfection.

Lead and Copper

Definitions:
 Action Level: The concentration of a contaminant which, if exceeded, triggers treatment or other requirements which a water system must follow.
 Action Level Goal (ALG): The level of a contaminant in drinking water below which there is no known or expected risk to health. ALGs allow for a margin of safety.

Copper Range: 0 ug/L to 250 ug/L
 Lead Range: 0 ug/L to 0 ug/L

To obtain a copy of the system's lead tap sampling data: 1070 State HWY 32, Sullivan, IL 61951

CIRCLE ONE: Our Community Water Supply has/has not developed a service line material inventory.
 To obtain a copy of the system's service line inventory: 1070 State HWY 32, Sullivan, IL 61951

Lead and Copper	Date Sampled	MCLG	Action Level (AL)	90th Percentile	# Sites Over AL	Units	Violation	Likely Source of Contamination
Copper	2025	1.3	1.3	0.0965	0	ppm	N	Corrosion of household plumbing systems; Erosion of natural deposits.

Water Quality Test Results

Definitions: The following tables contain scientific terms and measures, some of which may require explanation.

Avg: Regulatory compliance with some MCLs are based on running annual average of monthly samples.

Level 1 Assessment: A Level 1 assessment is a study of the water system to identify potential problems and determine (if possible) why total coliform bacteria have been found in our water system.

Level 2 Assessment: A Level 2 assessment is a very detailed study of the water system to identify potential problems and determine (if possible) why an E. coli MCL violation has occurred and/or why total coliform bacteria have been found in our water system on multiple occasions.

Maximum Contaminant Level or MCL: The highest level of a contaminant that is allowed in drinking water. MCLs are set as close to the MCLGs as feasible using the best available treatment technology.

Maximum Contaminant Level Goal or MCLG: The level of a contaminant in drinking water below which there is no known or expected risk to health. MCLGs allow for a margin of safety.

Maximum residual disinfectant level or MRDL: The highest level of a disinfectant allowed in drinking water. There is convincing evidence that addition of a disinfectant is necessary for control of microbial contaminants.

Maximum residual disinfectant level goal or MRDLG: The level of a drinking water disinfectant below which there is no known or expected risk to health. MRDLGs do not reflect the benefits of the use of disinfectants to control microbial contaminants.

na: not applicable.

Water Quality Test Results

mrem: millirems per year (a measure of radiation absorbed by the body)

ppb: micrograms per liter or parts per billion - or one ounce in 7,350,000 gallons of water.

ppm: milligrams per liter or parts per million - or one ounce in 7,350 gallons of water.

Treatment Technique or TT: A required process intended to reduce the level of a contaminant in drinking water.

Regulated Contaminants

Disinfectants and Disinfection By-Products	Collection Date	Highest Level Detected	Range of Levels Detected	MCLG	MCL	Units	Violation	Likely Source of Contamination
Chlorine	2025	2.4	2 - 2.8	MRDLG = 4	MRDL = 4	ppm	N	Water additive used to control microbes.
Haloacetic Acids (HAA5)	2025	31	18 - 29.2	No goal for the total	60	ppb	N	By-product of drinking water disinfection.
Total Trihalomethanes (TTHM)	2025	80	47.9 - 94.2	No goal for the total	80	ppb	N	By-product of drinking water disinfection.